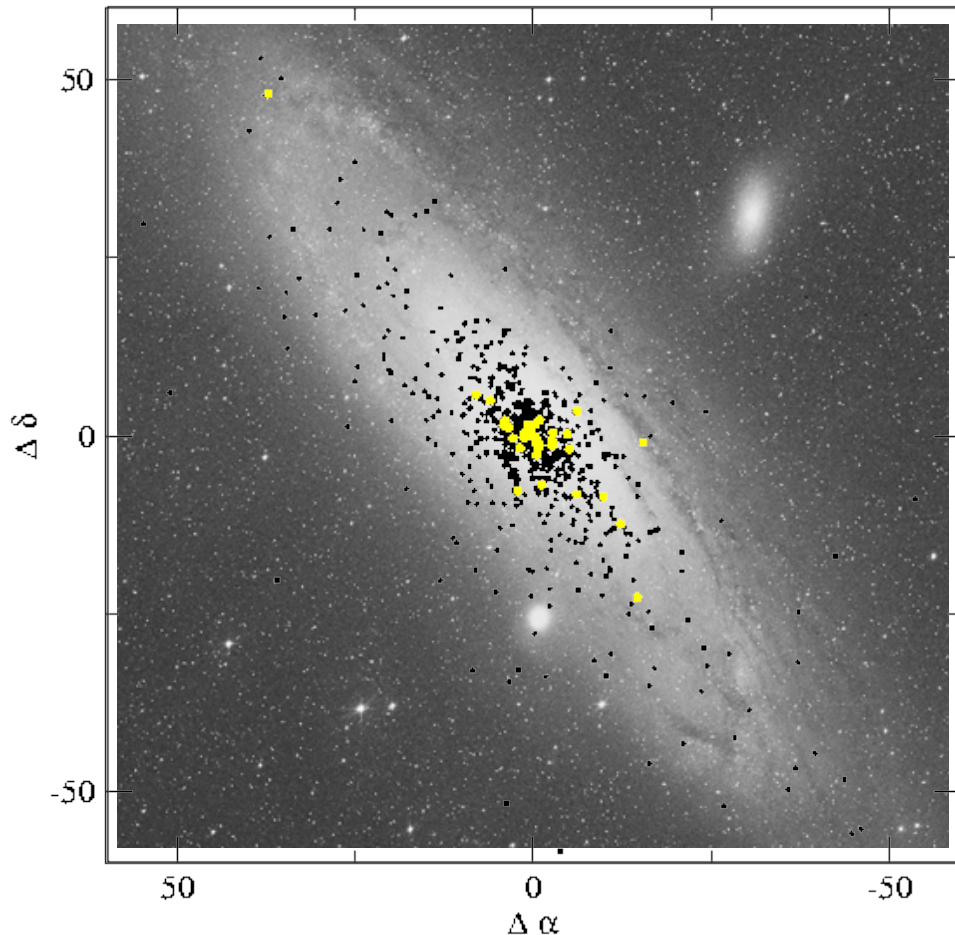


# M31 Recurrent Nova Search Underway



- Jahrese Reed at SDSU compiled positions for all M31 nova to date.
- 738 outbursts of which 85 are from 40 RNe candidates.
- $N_{RN}/N_{CN} \sim 0.13$
- If  $R_{CN} \sim 65 \text{ yr}^{-1}$  then  $R_{RN} \sim 7 \text{ yr}^{-1}$
- $\sim 30 \text{ yr}$  recurrence with  $dM/dt \sim 10^{-7} M_{\text{sun}} \text{ yr}^{-1} \rightarrow$  D.R.  $\sim 1 \times 10^{-4} \text{ yr}^{-1}$
- $\sim 3\%$  of the SNe Ia B.R.